



Southfield Terrace | | LS29 0PA

Asking price £264,500

**TW** | **TRANMER  
WHITE**  
Trusted Estate Agents



21 Southfield Terrace |  
| LS29 0PA  
Asking price £264,500

A beautifully presented and spacious two double bedroomed mid-terrace home arranged over three floors, enjoying outstanding long distance views and featuring low maintenance gardens to the front and rear.

- Two Double Bedrooms
- Spacious Bathroom
- Low Maintenance Gardens To Front & Rear
- Stunning Views Over Open Fields
- Cul De Sac Location
- Walking Distance From Village Amenities

With gas central heating, the accommodation comprises:

### Ground Floor

#### Entrance Porch

A double glazed entrance porch with a door leading to:

#### Sitting Room

13'1 x 13'1 (3.99m x 3.99m)

An inviting sitting room featuring a wood burning stove on stone hearth with brick surround, ceiling rose and a fitted cabinet.

#### Dining Room

10'0 x 8'1 (3.05m x 2.46m)

With high quality wood flooring and an understairs store cupboard.





Forming part of a peaceful cul de sac within a well-established residential area, this charming property retains much of its original character and is within a short walk of Addingham Main Street.



## Kitchen

13'6 x 7'11 (4.11m x 2.41m)

Comprising an extensive range of base and wall units with coordinating work surfaces and concealed lighting as well as a slate tiled floor. Appliances include a Smeg range cooker with five ring gas hob plus hood over, dishwasher, space for fridge/freezer and plumbing for a washing machine. The kitchen also features a dual aspect with views over open fields as well as a door leading to the rear garden.

## First Floor

### Bedroom

13'2 x 10'11 (4.01m x 3.33m)

A spacious double bedroom including a wood panelled wall and an exposed brick chimney breast with cast iron feature fireplace.

### Bathroom

10'8 x 7'3 (3.25m x 2.21m)

A particularly generous bathroom comprising a bath, walk-in shower, hand wash basin and w.c.

## Second Floor

### Bedroom

14'1 x 13'2 (4.29m x 4.01m)

A second double bedroom including an exposed brick chimney breast, exposed beams, useful under-eaves store cupboards and a dormer window offering a delightful outlook.

## Outside

### Front Garden

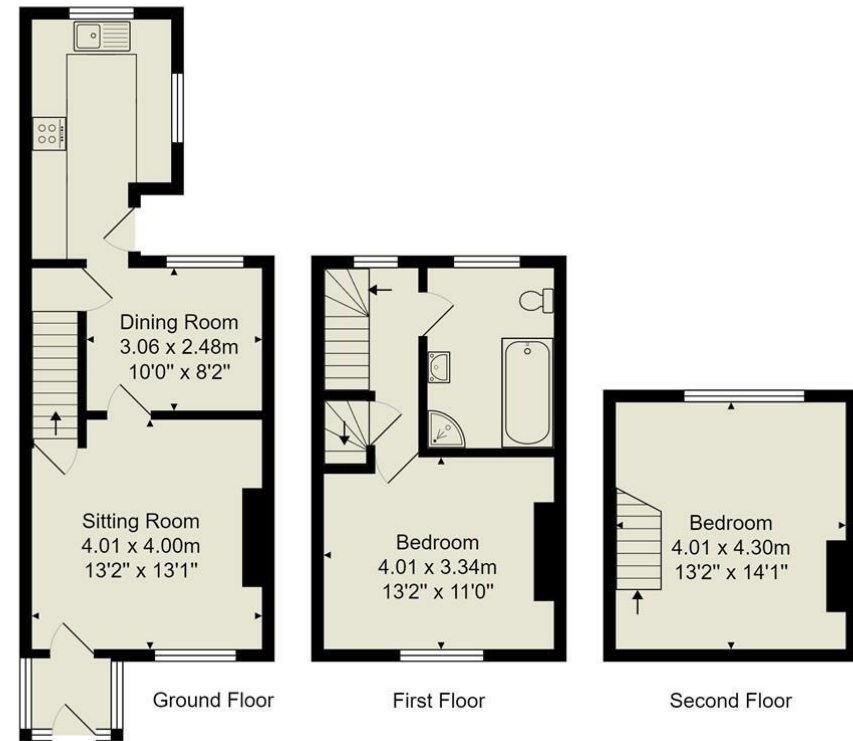
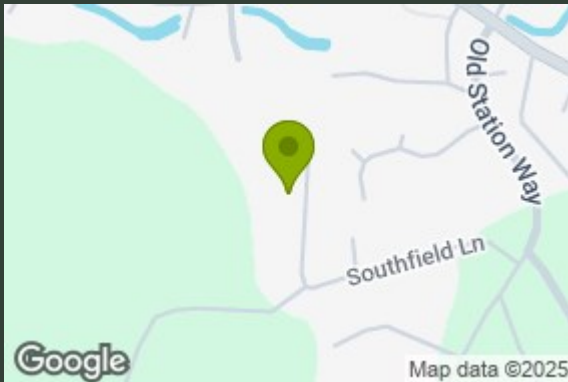
A pretty gravelled area enclosed by iron railings.

### Rear Garden

Situated beyond the access road to the rear of the property is a lovely gravelled seating area that overlooks the adjoining fields.

## Tenure

Freehold.

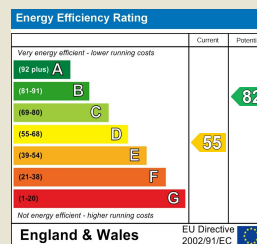


Total Area: 81.9 m<sup>2</sup> ... 882 ft<sup>2</sup>

All measurements are approximate and for display purposes only.

No liability is accepted by either the agency or Box Property Solutions Ltd as to the exact measurements of the rooms.

Box Property Solutions Ltd retains the copyright on this plan and allows agents to use it with agreed permission.



139 Bolling Road

Ben Rhydding

Ilkley

West Yorkshire

LS29 8PN

01943 661141

ilkley@tranmerwhite.co.uk

<https://www.tranmerwhite.co.uk/>